



ST. JOSEPH'S UNITY HEALTH TORONTO

*Join us in Creating the Best Care Experiences, Created Together,
right here at St. Joseph's Health Centre*

St. Joseph's Health Centre, a site of Unity Health Toronto, provides primary, secondary and selected tertiary services to the West Toronto region. The hospital has approximately 400 beds, including 50 psychiatric beds and various outpatient psychiatric programs and services.



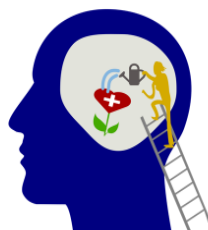
We serve a culturally and economically diverse population of about 530,000, through **shared values of Inclusivity, Community, Excellence, Compassion and Human Dignity**. We are a community academic site that provides unique clinical education and supervision to the full spectrum of medical learners, from clinical clerks to residents.

60,000
visits to St. Joseph's outpatient mental health services annually

4,634
visits through Emergency from people in crisis due to a mental health and addiction condition in FY 2021/22

1,092
Mental Health inpatient admissions, including 175 child and adolescent admissions in FY 2021/22

20%
of Canadians will personally experience a mental illness in their lifetime



The Mental Health and Addictions (MHA) Program includes emergency psychiatry, inpatient, outpatient, addictions and withdrawal management services. Divisions include Child and Adolescent Mental Health, Adult Acute Care and Adult Ambulatory Services. The Program currently has 25 psychiatrists, each offering a unique contribution to the patients we serve in collaboration with a deeply committed multidisciplinary team.

The MHA Program offers treatment through a variety of **innovative modalities and dynamic settings** including therapeutic groups, a newly developed adult day treatment program, neurostimulation, rapid access crisis clinics, medication and metabolic wellness clinics, and a day school program in the child and adolescent division.



Check us out:

<https://unityhealth.to/locations/st-josephs-health-centre/>

St. Joseph's is **committed to the academic mission**. We support career development through creative professional activities, academic and clinical leadership development opportunities, clinical teaching, research, and quality improvement. Learners have access to a variety of rotations in a general hospital setting that serves a large proportion of patients experiencing marginalization.

Although the healthcare landscape is ever changing, we are fortunate to still enjoy nil out of pocket administrative and overhead expenses. In return, all staff contribute to the call schedule, contribute to coverage and are actively engaged in the continuous growth and development of the Department.

Our scheduling system allows staff to largely select their preferred on call shifts. In addition, vacation coverage within a reasonable annual allotment is guaranteed through a centralized vacation sign up system.

Remuneration is drawn from a mix of fee-for-service work, a competitive clinical stipend, and leadership and academic stipends. Practice is lucrative given our high volume services, including routine clinical work and a busy on-call service.



We are located in a picturesque yet exciting setting, with beautiful lakeside views while also being nestled between High Park and the dynamic Roncesvalles Village. Our patient population is diverse, vibrant and the source of our shared inspiration for dignity and excellence in care.

Want to learn more about the Mental Health and Addictions Program at St. Joseph's Health Centre? Join us at the November 8, 2023 Community Academic Site Recruitment Fair.

Contact Us

St. Joseph's Health Centre

30 The Queensway, Toronto ON

<https://unityhealth.to/locations/st-josephs-health-centre/>

Tel: 416 530 6020

wendy.murphy@unityhealth.to